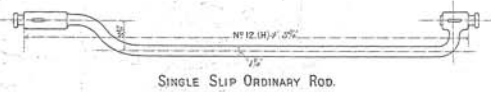
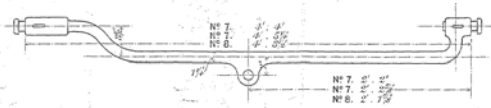
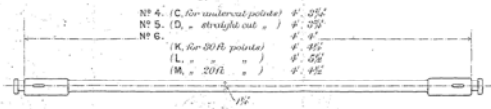
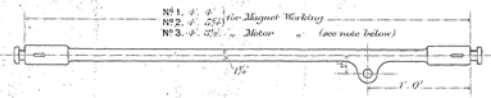


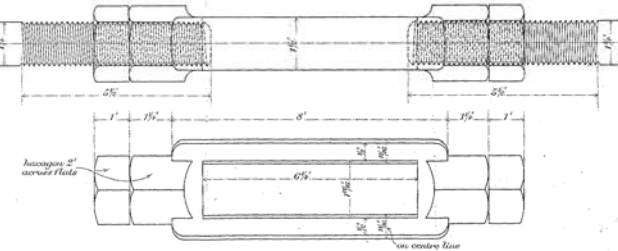
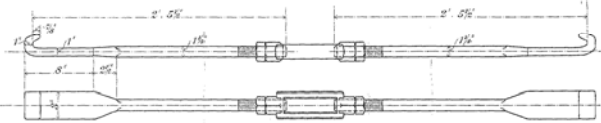
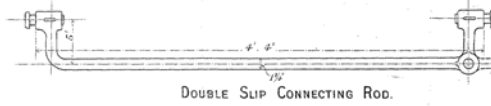
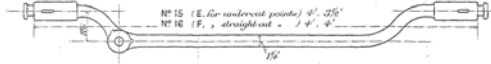
L. & N. W. R. P^T WAY DEPT POINT & STRETCHER RODS.

DRAWING

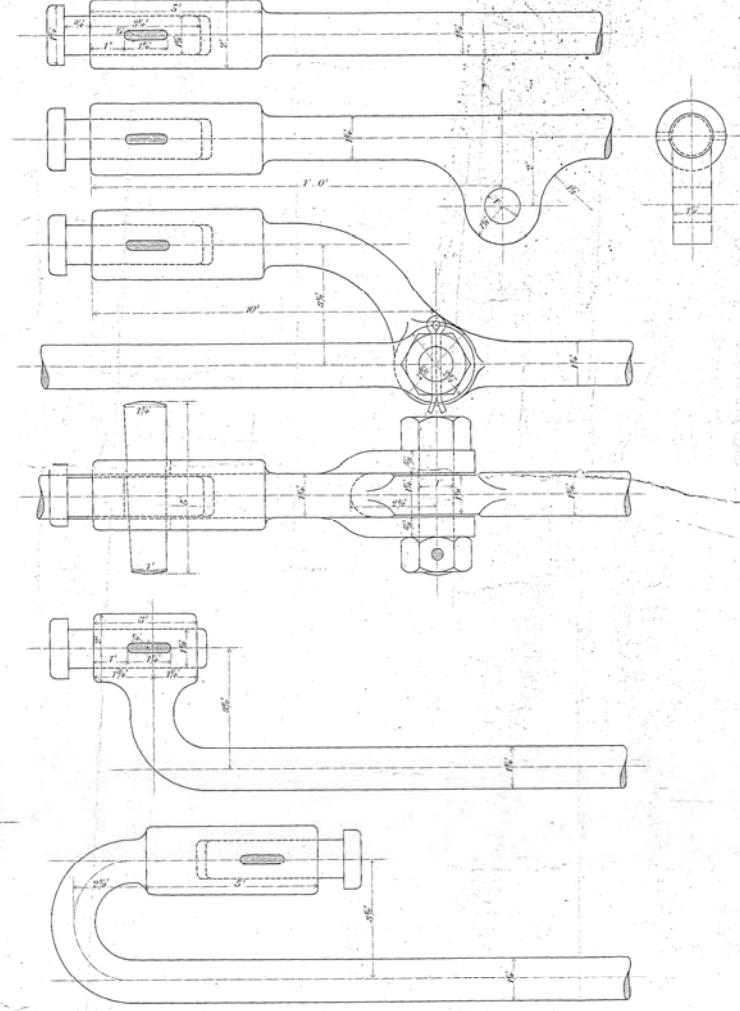
FOR B. S. SECTION RAILS, 95 LBS. PER YARD.



Note: Nos. 1, 2, 6, 7. Rods used for Magnet Working.
Nos. 3, 4, 8, 9, 10. " " " Motor " "
Nos. 4, 5, 11, 12, 13, 14, 15, 16. " " " Mechanical " "



For details of Stretcher Rods for "Three throws" see Drawing No. 7.



SCALE $\frac{1}{2}$ INCHES - 1 FOOT.



DETAILS HALF FULL SIZE.